



City of Reggio Calabria

Publication of the Municipal Statistics Office

Dirigente
Avv. Francesco Zoccali

Responsabile U.O.
Giuseppe Pino

Istruttori direttivi
Caterina Caridi
Tommaso Cotronei

Collaboratori Ufficio Statistica
Nadia Azzolina
Antonino Marra
Demetrio Pennestri

Rilevatori prezzi al consumo
Celestino Bruno
Mario Lombardo
Beniamino Migali
Filippo Ventura
Maria Zumbo

A cura di
Giuseppe Pino, Tommaso Cotronei
Antonino Marra, Caterina Caridi

Data source, if not otherwise specified,
is the Municipality of Reggio Calabria

UNITÀ ORGANIZZATIVA STATISTICA E QUALITÀ DEI SERVIZI

89123 Reggio Calabria - Via Torrione 2/n
Tel. 0965/812684 - Fax 0965/28042
e-mail: statistica@comune.reggio-calabria.it

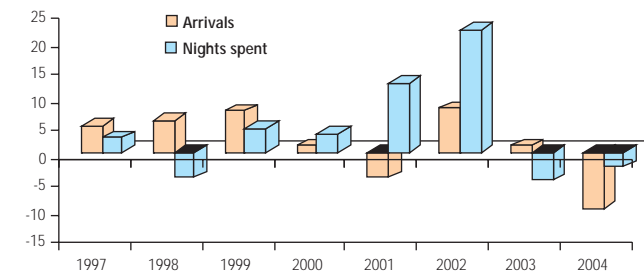
<http://www.reggiocal.it/statistica>

Tourism

Arrivals and average nights spent in hotels and other accommodations - Years 1997-2004

Years	Arrivals	% Change on previous year	Nights spent	% Change on previous year	Average nights spent
1997	64,899	+4.66	124,769	+2.69	1.92
1998	68,590	+5.69	119,018	-4.61	1.74
1999	73,638	+7.36	124,203	+4.36	1.69
2000	74,523	+1.20	128,446	+3.42	1.72
2001	71,183	-4.48	144,388	+12.41	2.03
2002	76,703	+7.75	176,062	+21.94	2.30
2003	77,618	+1.19	167,014	-5.14	2.15
2004	69,808	-10.06	162,780	-2.54	2.33

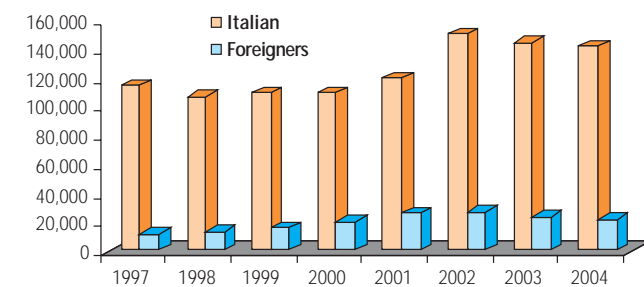
Source: APT Reggio Calabria.



Arrivals and nights spent in hotel and other accommodations - Years 1997-2004

Years	Arrivals		Nights spent	
	Total	Foreigners	Total	Foreigners
1997	64,899	6,012	124,769	11,037
1998	68,590	7,395	119,018	12,656
1999	73,638	7,667	124,203	14,761
2000	74,523	10,813	128,446	19,470
2001	71,183	11,103	144,388	25,371
2002	76,703	13,017	176,062	26,340
2003	77,618	11,633	167,014	22,796
2004	69,808	9,273	162,780	21,524

Source: APT Reggio Calabria.



Economy

Enterprises by sector - 31 december 2004

Industry group	Registered	Active
Agriculture, hunting and forestry	541	530
Fishing and related services	17	16
Mining	16	14
Manufacturing	1,586	1,478
Electricity, gas and water supply	3	3
Construction	1,419	1,279
Wholesale and retail trade	5,861	5,499
Hotels and restaurant	396	377
Transport, storage and communication	443	409
Financial intermediation	365	355
Real estate, renting and business activities	1,028	935
Public administration, defence and social assistance	3	3
Education	109	104
Health and social services	109	96
Other services	653	631
Enterprises not elsewhere listed	1,386	89
TOTAL	13,935	11,818

Source: Calabria chamber of commerce

Labour market figures - Year 2004 (Province)

	Males	Females	Males and Females
Labour Force (thousands)	130	81	211
Activity Rate (%)	69.8	43.1	56.4
Employment Rate (%)	58.2	32.9	45.5
Unemployment Rate (%)	16.5	23.7	19.2

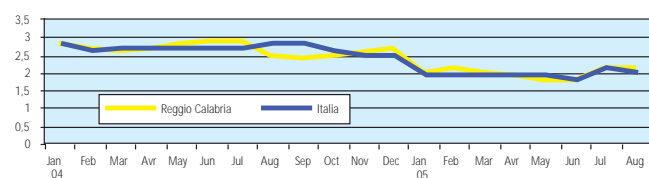
Source: Istat - Labour force survey - Average 2004

Above figures are not comparable to those of previous years due to major methodological changes in labour force surveys.

Consumer price index - average percentage changes 2001-2004

Chapter	Average annual changes			
	2001	2002	2003	2004
Overall index (including tobacco)	+2.4	+2.1	+2.2	+2.7
Overall index (excluding tobacco)	+2.3	+2.1	+2.1	+2.8
Food and non-alcoholic beverages	+2.6	+2.7	+2.6	+3.2
Alcoholic beverages and tobacco	+2.7	+1.4	+6.7	+7.8
Clothing and footwear	+1.8	+1.9	+1.5	+2.3
Housing, water, electricity, gas	+2.7	+0.4	+2.9	+1.5
Furnishings and household equipment	+2.3	+1.5	+1.4	+1.8
Health	+1.7	+2.8	+1.8	+1.7
Transport	+1.4	+2.7	+2.8	+2.8
Communications	-2.3	-1.8	-2.4	-12.2
Recreation and culture	+3.7	+3.0	+0.6	+1.1
Education	+6.0	+3.0	+3.0	+1.9
Hotels, cafes and restaurants	+2.2	+2.1	+3.1	+3.5
Miscellaneous goods and services	+3.4	+3.0	+2.6	+5.7

Consumer price index: comparison Reggio Calabria - Italy



Education and Culture

Schools, classrooms, teachers and pupils in the schools - School Year 2004/2005

	Nursery	Primary	Junior sec.	Senior sec.	Total
Schools	159	72	21	17	269
Classrooms	320	539	315	538	1,712
Teachers	563	858	600	1,120	3,141
Registered	6,504	9,430	6,609	12,223	34,766
Students per classrooms	20.3	17.5	21.0	22.7	20.3
Students per teachers	11.6	11.0	11.0	10.9	11.1

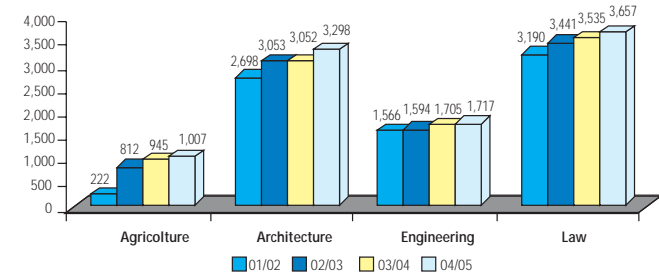
Source: C.S.A. Area of Reggio Calabria; FISM Reggio Calabria

Reggio Calabria University. Registered and graduates

Years	Registered			Graduates
	Males	Females	Total	
2001/02	3,919	3,757	7,676	492
2002/03	4,665	4,235	8,900	648
2003/04	4,878	4,359	9,237	751
2004/05	5,062	4,617	9,679	825

Source: MIUR-URST and AFAM

Reggio Calabria University. Registered and graduates

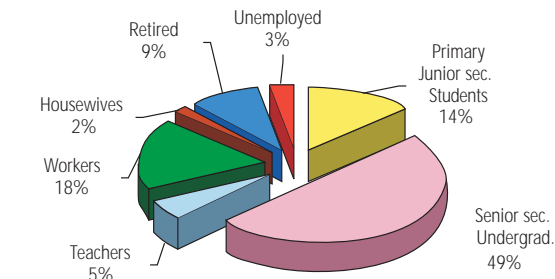


Reggio Calabria Library - Year 2004

Books	113,729
Audio Video	339
Users	14,040
Registered visitors	218
Loans	1,935
Books consulted	22,048
Schools on visit	1,532
Students	394

Education and Culture

Library users by profession - Year 2004



"Villa Genoese Zerbi": Attendance and average number of visitor for events hosted from september 2004 to october 2005

Event	Opening days	Visitors	Average number of visitors per day
Z.O.U. Zona d'urgenza	50	19,090	381,80
Movimenti/Movimenti	84	6,804	81,00
Il cinema negli occhi "Tazio Secchiaroli"	52	2,199	42,29
Sensi contemporanei			
Villa Genoese Zerbi 1915-2005			
Conoscenza didattica e restauro nel progetto d'architettura	13	778	59,85
Totale	199	28,871	145,08

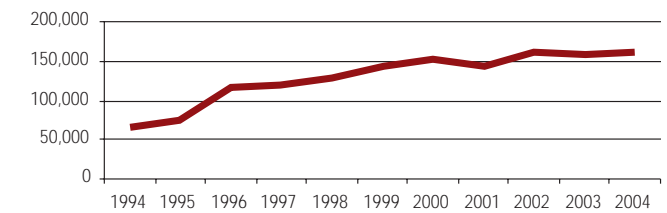
Source: U.O. Villa Zerbi

Visitors at the Museum - Years 1994-2004

Years	Visitors		
	Visitors	Max Monthly presence	Month of max presence
1994	64,945	13,107	August
1995	74,641	15,490	August
1996	115,000	27,038	August
1997	118,898	26,329	August
1998	127,487	25,169	May
1999	144,563	27,398	August
2000	151,629	28,735	May
2001	144,189	27,979	May
2002	162,059	29,667	August
2003	158,905	28,649	May
2004	159,873	29,502	May

Source: National Archaeological Museum of Reggio Calabria.

Visitors at the Museum - Years 1994-2004



City of Reggio Calabria



Numbers of REGGIO CALABRIA

Territory

<i>Geographic position (City Centre)</i>	
- Latitude North	38°06'20"
- Longitude West of Rome	3°11'28"
- Longitude East of Greenwich	15°38'36"

<i>Altitude Details:</i>	
- In central position (Piazza Italia)	m 11
- Maximum (Podargoni)	m 1,803
Population december 31, 2004	183,041
City Area	Square Km 236.02
Population Density	Ab/Square Km 776

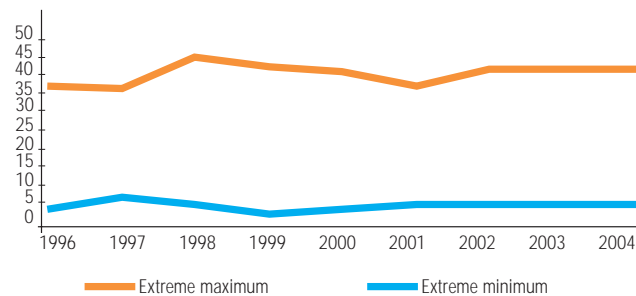
Weather

Rainfall: quantity (mm) and rainydays; **wind:** predominant direction and maximum speed (nods) - Airport of Reggio Calabria Weather station. Years 1996-2004

Years	Rainfall				Wind	
	Total	Daily maximum	Montly maximum	Most Rainy month	Predominant Direction	Maximum Speed
1996	995.0	156.2	221.6	October	North	59
1997	446.1	45.2	121.6	September	North	66
1998	365.6	20.4	60.2	September	North	62
1999	427.1	30.2	95.8	September	North	58
2000	426.9	80.4	187.8	September	North	55
2001	624.7	44.4	249.0	December	North	47
2002	440.6	55.4	164.5	December	North	50
2003	627.9	72.5	126.6	December	North	49
2004	680.3	44.0	148.8	December	North	53

Source: Enav. SpA - Airport of Reggio Calabria Weather Station

Extreme temperatures (°C) Airport of Reggio Calabria Weather Station Years 1996-2004

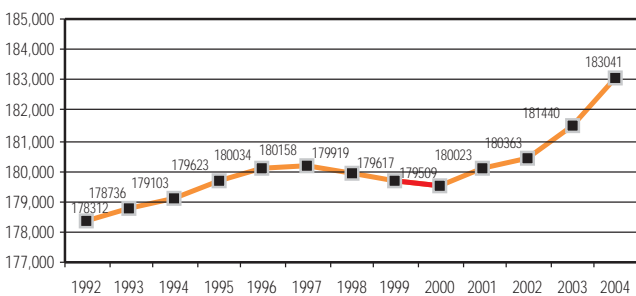


Population

Resident population 2000-2004

Years	Sex		Total	Change on previous Year
	Males	Females		
2000	86,898	92,611	179,509	-
2001	86,909	93,114	180,023	+0.29%
2002	86,940	93,423	180,363	+0.19%
2003	87,339	94,101	181,440	+0.60%
2004	87,945	95,096	183,041	+0.88%

Resident Population

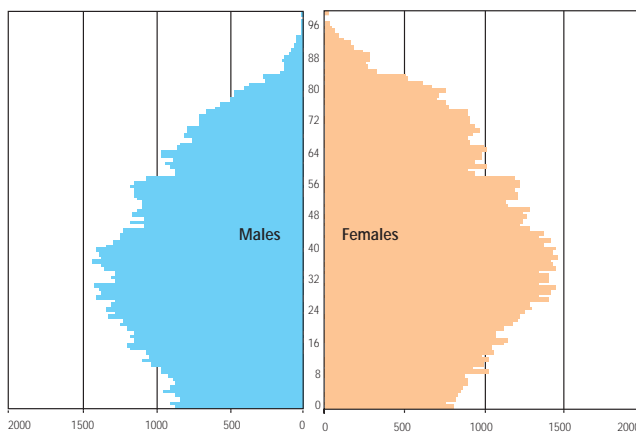


Resident Population By Age Range - 2004

Age Range	Males	Females	Total
0-4	4,425	4,086	8,511
05-09	4,548	4,610	9,158
10-14	5,207	5,041	10,248
15-19	5,845	5,492	11,337
20-24	6,256	6,023	12,279
25-29	6,696	6,791	13,487
30-34	6,677	7,000	13,677
35-39	6,906	7,243	14,149
40-44	6,519	7,001	13,520
45-49	5,734	6,281	12,015
50-54	5,588	6,021	11,609
55-59	5,388	5,819	11,207
60-64	4,554	4,842	9,396
65-69	4,226	4,798	9,024
70-74	3,719	4,647	8,366
Over 75	5,657	9,401	15,058
Total	87,945	95,096	183,041

Population

Age pyramid 2004



Natural and migratory movement

Years	Births	Deaths	Registrations	Cancellations
2000	1,571	1,693	2,459	2,445
2001	1,480	1,566	1,933	2,343
2002	1,594	1,574	20,89	1,769
2003	1,703	1,809	3,286	2,103
2004	1,748	1,630	5,862	4,379

Resident population by sex and civil status - 2002-2004

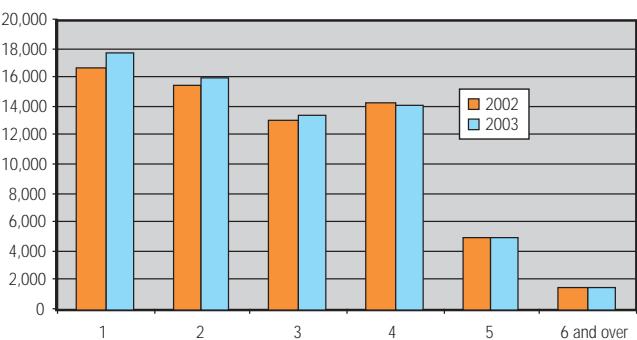
Years	Single	Married	Widowed	Divorced
Males				
2002	41,591	42,841	1,964	425
2003	41,359	43,559	1,972	449
2004	41,447	43,975	2,049	474
Females				
2002	38,396	43,788	10,522	836
2003	38,049	44,364	10,767	921
2004	38,208	44,848	11,047	993
Total				
2002	79,987	86,629	12,486	1,261
2003	79,408	87,923	12,739	1,370
2004	79,655	88,823	13,096	1,467

Population

Households by size

Nr. of members	Years	
	2002	2003
1	16,802	17,787
2	15,510	15,982
3	13,151	13,392
4	14,254	14,179
5	5,084	4,929
6 and over	1,591	1,526
Total	66,392	67,795
Average Household size	2,7	2,7

Households by size



Marriages

Years	Total Marriages	Of which civil	Of which religious	Of which whith foreigners
1993	999	136	863	-
1994	982	125	857	21
1995	928	118	810	35
1996	897	139	758	26
1997	894	84	810	82
1998	850	105	745	24
1999	914	121	793	33
2000	945	139	806	30
2001	825	130	695	34
2002	902	133	769	36
2003	899	177	722	75
2004	874	179	695	54

Population

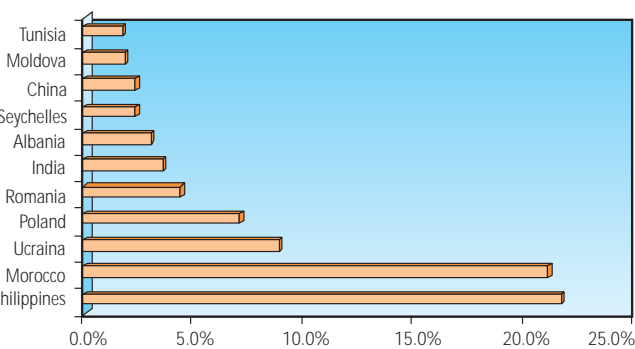
Foreign resident population by sex at 31 december 2004

	Males	Females	Total	% of total
Europe	515	1,301	1,816	34.6%
Africa	985	621	1,606	30.6%
America	67	138	205	3.9%
Asia	733	859	1,592	30.3%
Oceania	21	16	37	0.7%
Total	2,321	2,935	5,256	100.0%

Foreign resident population by nationality (most representative). Years 2004

Nationality	Males	Females	Total
Philippines	435	704	1,139
Morocco	711	396	1,107
Ucraina	62	406	468
Poland	60	315	375
Romania	84	149	233
India	153	34	187
Albania	104	61	165
Seychelles	30	98	128
China	60	65	125
Moldova	41	57	98
Tunisia	63	34	97

Foreign resident population by nationality (most representative). Years 2004



Population

Territorial sub-division of Reggio Calabria town council area



Resident population by district and sex, households. Year 2003

Districts	Males	Females	Total	Household
I Centro storico	4,691	5,916	10,607	4,781
II Pineta Zerbi-TreMolini-Eremo	6,367	7,526	13,893	5,658
III S.Caterina-Vito	5,056	5,587	10,643	4,180
IV Trabocchetto-Condera-Spirito Santo	8,234	8,898	17,132	6,275
V Ferrovieri-Stadio-Gebbone	8,767	9,867	18,634	7,283
VI Sbarre	9,104	10,169	19,273	7,153
VII S.Giorgio-Modena-S.Sperato	7,407	7,637	15,044	5,178
VIII Catona-Salice-Rosali-V.S.Giuseppe	6,092	6,406	12,498	4,615
IX Gallico-Sambatello	5,008	5,113	10,121	3,685
X Archi	4,504	4,629	9,133	3,195
XI Orti-Podargoni-Terreti	1,140	1,180	2,320	930
XII Cannavò-Mosorrofa-Cataforio	3,525	3,402	6,927	2,417
XIII Ravagnese	7,861	8,044	15,905	5,432
XIV Gallina	3,378	3,347	6,725	2,259
XV Pellaro	6,205	6,380	12,585	4,754
Totale	87,339	94,101	181,440	67,795

Resident population by district and sex. Year 2003

